



56 JEFFELS RD • 2 SUNDEW RD

**ETHEKWINI**  
COLD STORES

**DYNAMIC**  
GROUP COMPANY



+27 (31) 913 1800



info@ethekwincos.co.za



www.ethekwincos.co.za



ECS1 - 54/56 Jeffels Road, Prospecton, Durban, 4113, South Africa  
ECS2 - 2 Sundew Road, Cornubia, Durban, 4339, South Africa

## OUR VISION

Our vision is to be well known as an exceptional cold store in every respect with advanced technology and facilities, superior service and rigorous compliance with client and industry requirements, whilst delivering balanced efficiencies for all our clients.













## OUR MISSION

Through refined systems and procedures, proficient staff and extensive and consistent training, state of the art equipment and efficient communication, Ethekwini Cold Stores (Pty) Ltd pledges to provide clients with a premium cold storage experience.

We are passionate about and committed to constantly improving our services and capabilities to guarantee that we are in step with world class standards in a manner that exceeds our clients' expectations.



## OUR VALUES

-  Our clients!
-  Trust, integrity and excellence
-  Our Team is our greatest strength
-  Zealous and reliable care of our Team
-  Transparent and positive attitude
-  100% accountability
-  Principles of value add
-  Solutions driven
-  Clear and truthful communication
-  Sense of urgency
-  Improvement and innovation
-  Financial endurance and ongoing profitability are fundamental to long term success



## ABOUT US

---

Ethekwini Cold Stores (Pty) Ltd's first cold store (ECS1 situated in Isipingo Durban) was completed in 2003 as a specialist fruit handling store. Only the most experienced consultants and suppliers were employed which guaranteed compliance with industry and client requirements. In 2022 its second cold store (ECS2 situated in Cornubia Durban) was established. We continue to explore the latest technology which contributes to protecting the environment, improving efficiencies and quality and reducing cost.

Ethekwini Cold Stores (Pty) Ltd is managed hands on by our experienced professional Directors who observe good corporate governance and who source only the highest calibre professionals for our team. Our team collectively maintains the highest professional, ethical and business standards.



## ABOUT US

---

We fervently participate in research and training programmes for all facets of our business to ensure the proper handling of all products stored. Whilst we strive for structure and efficiency, a crucial aspect of our team's training also focuses on providing our clients with as much flexibility without compromising service quality.

We are transparent about and accountable for any oversights and errors that may occur. We establish and nurture the trust of our clients through honesty and delivery of a reliable and consistently high quality service. This remains our ultimate benchmark.



## SERVICES



### COOLING

**ECS1** – From -2.5°C to ambient room temperatures, including forced air cooling

**ECS2** – From +5°C to ambient room temperatures



### HANDLING CAPACITY

**ECS1** – Can receive and dispatch 2 000 pallets per day

**ECS2** – Can receive and dispatch 1 000 pallets per day



## SERVICES



### STORAGE CAPACITY

**ECS1** – 8 500 pallets. See the breakdown on page 6

**ECS2** – 4 050 pallets commercial in static racking single picking faces



### LIVE ACCURATE DATA

Our state of the art warehouse management system provides clients with accurate pallet movement data.

Access to live, accurate data, reporting on stock received, on hand and dispatched, ensures that the client's finger is on the pulse at all times.



## ECSI SERVICES

---

- Undercover off loading: container and break bulk
- Palletisation of loose cargo
- A variety of additional handling services including re-labelling, carton and pallet repairs and re-packing
- Forced air cooling of product received at ambient temperatures
- Forced air cold treatment for special (export) market programs
- DALRRD and PPECB approved product inspection facilities
- Automated mobile racked storage system
- Multiple storage chambers with individual temperature control
- 24/7 monitoring of special market product temperatures recorded via pulp temperature probes to sophisticated software with automated alerting



## ECSI SERVICES

---

- Entire facility is temperature air locked
- 24/7 monitoring of all chamber temperatures via networked air temperature probes to sophisticated software with automated alerting
- State of the art IT systems including a sophisticated warehouse management system and bar-coded pallet tracking, enabling access to accurate live data
- Extensive fleet of the latest model handling equipment all linked to, and managed wirelessly by the warehouse management system
- Comprehensive security system including CCTV cameras, 24/7 security with armed response, automated fire detection and sprinkler system, and large capacity backup diesel generator
- Undercover loading of container and break bulk



# ECSI FACILITIES

Total weight capacity of 12 750 metric tonnes. The warehouse is configured with racking to accommodate 8 500 fruit pallets during the SA citrus export season (April to September) and can be adjusted to any combination totalling 12 750 metric tonnes in the off-season (October to March).

## PHYSICAL ELEMENTS AND HANDLING EQUIPMENT:

**The 8 500 fruit pallet configuration can all accommodate hi-cube pallets and includes:**

- 3 500 commercial + 5 000 commercial EU Oranges or Special Markets (Steri) or sub zero spaces in mobile racking with single picking faces in 4 chambers with the ability to maintain as low as -1.5°C
- 1 000 pallet spaces in forced air cooling chambers with the ability to cool to -2.5°C



# ECSI FACILITIES

Undercover private road intake

Undercover road dispatch

Undercover air locked container bays

Air locked and temperature controlled access to chambers

Completely integrated backup power supply system including cooling

Latest battery powered hi-reach and counter-balance trucks, all equipped with RF product handling communication system

Automated battery charging bay with sufficient capacity for 24 hours operations

State of the art inspection facility approved for special market fruit program inspections



# ECS2 SERVICES

Strategically located 15kms from the airport, 30kms away from the Durban harbour

Easily accessible from the N2 and away from the citrus season congestion that surrounds Durban

- Highly skilled and experienced team – teamwork makes the dream work!
- PPECB approved
- 24/7 offloading & loading
- Palletisation of loose cargo
- A variety of additional handling services including re-labelling, pallet repairs and repacking



# ECS2 FACILITIES

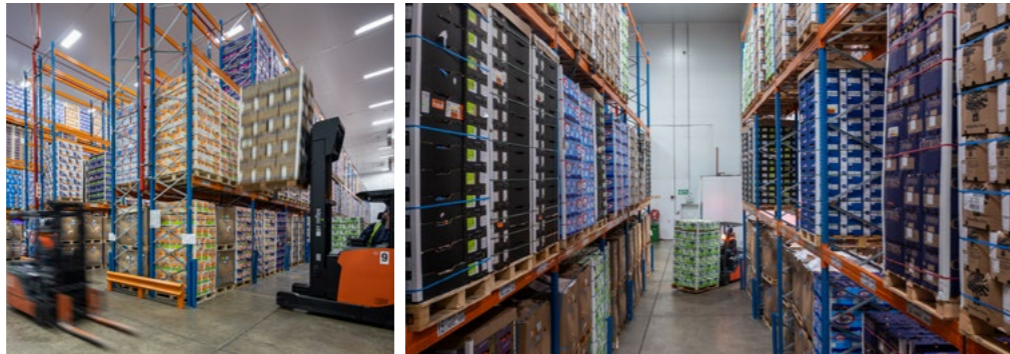
- A total of 4 050 pallets in static racking single picking faces
- Undercover offloading: container and break bulk
- Entire facility is temperature air locked
- Temperature controlled loading bays
- Single picking face static racking
- 7 loading bays with dock levellers
- Yard space for 30 trucks
- Plug points reconfigured for 4 pin reefer plug
- State of the art IT systems including sophisticated warehouse management system and barcoded pallet tracking, access to accurate live data
- Extensive fleet of the latest model handling equipment linked to, and managed wirelessly by the warehouse management system
- Comprehensive security system including CCTV cameras, 24/7 security with armed response, automated fire detection and sprinkler system, and backup electricity generators
- Access controlled



## QUALITY, SAFETY & CONTROL SYSTEMS

---

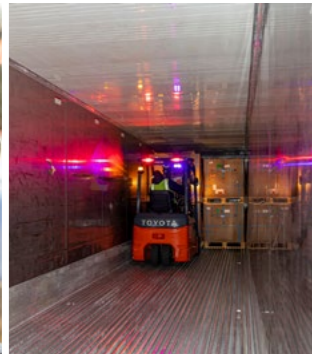
- Acceptability for Food Premises in terms of the Health Act
- Further internal Safety and Quality awareness programs structured to comply with all statutory and mandatory legislation and regulations
- In addition to on site trained personnel, we employ specialist consultants to ensure implementation, auditing and reporting of all systems
- High pressure automated sprinkler system, together with handheld extinguishers and zone warning system



## INFORMATION SYSTEMS

---

- The best hardware available for the quick and reliable processing and reporting of data, including: RF handheld scanners, RF truck mount terminals, RF temperature monitoring probes, servers, UPS, etc.
- The Solution Management Software specifically designed for the SA fruit export industry, but which can cater for any other types of cargo
- Carel and Nvirosense temperature monitoring systems for the live monitoring of sterilisation programs, chamber performance, etc.





## HUMAN RESOURCES

---

We employ a combination of in-house and outsourced staffing solutions, ensuring a selection of only the best skills and experience in the industry. Our resources provide for a 24 hours 7 days per week service, and current maximum staffing employs in excess of 160 personnel.

Our staffing structure includes mostly previously disadvantaged personnel on all levels, from management to general worker.

We ensure that we not only employ the best skilled and experienced personnel available, but we also have extensive training and research programs for all technical aspects relating to the correct handling and care of all product types we warehouse.

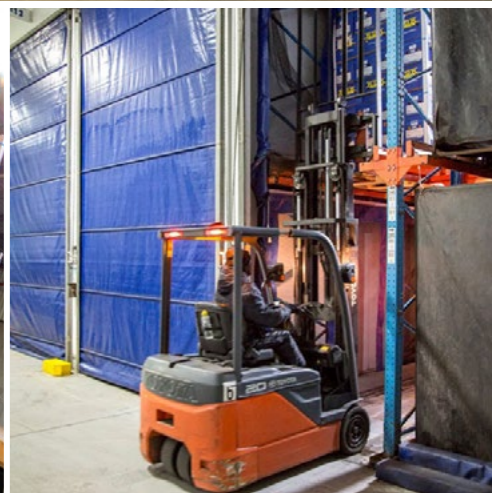


## INSURANCE

---

We carry substantial cover on the facility and our clients' cargo, including:

- Public Liability
- Cover at market value for fire & other large scale perils, theft, damages etc.



“Very responsive team and excellent company to work with. We enjoy our longstanding partnership, and jointly we constantly strive to improve service to our clients”  
- Horizon Fruits Logistics

“It’s not what you say, but how you do the job at hand – we commend and thank you Ethekwini Cold Stores”  
- Grower Exporters

“Core Fruit started working with Ethekwini Cold Stores 9 years ago and as a result of their excellent service and friendly staff our business has grown from strength to strength”  
- Core Fruit



+27 (31) 913 1800



info@ethekwini.co.za



www.ethekwini.co.za



ECS1 - 54/56 Jeffels Road, Prospecton, Durban, 4113, South Africa  
ECS2 - 2 Sundew Road, Cornubia, Durban, 4339, South Africa